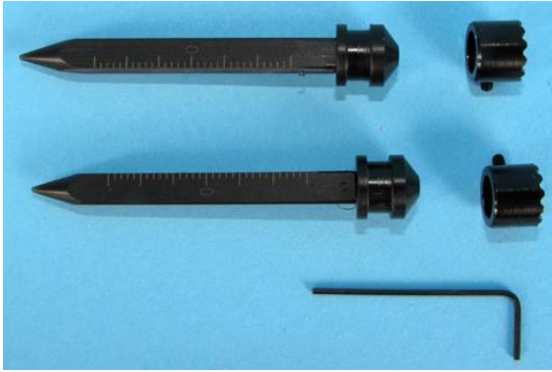


- **Application Notes**

Using Jaw Holder Cuffs

[502063](#) includes a kit with the [502080](#) jaw holder cuffs and ear bars. (See image below.)



To use the jaw holder cuffs ([502080](#)), unscrew the caps from the ends of the earbars.



Then, press the jaw holder cuff onto the end of the earbar and tighten the set screw with the hex wrench.

